

Streamline 6013LED Midi Indirect Pendant

INTERIOR

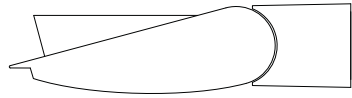
MODEL	WATTS	COLOR TEMPERATURE	VOLT	OPTIONS	COLOR
6013	134L 1 x 134 watts 12,400 lumens ¹	3K 3000K	120*	P(_") pendant length	WT white texture
		35K 3500K	208	WL wet location	BT black texture
	101L 1 x 101 watts 9,300 lumens ¹	4K 4000K	240	CV cut off visor for downward tilt	SM silver metallic
		5K 5000K	277	DIM dimming driver 0 - 10V control	AN aluminum natural
			347+	NAT natatorium construction	BZ bronze
					GM gunmetal
					WS white satin
					BM black matte
					RAL specify no.

*Standard configuration unless otherwise specified ¹Delivered lumens (4000K) +Consult factory

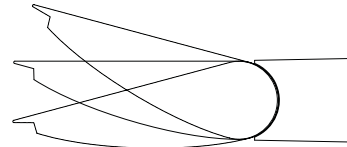
SAMPLE CATALOG NUMBER: 6013 - 134L - 4K - 120 - P24 - WT

Using this catalog number would order 1 model 6013 midi indirect ceiling wash pendant luminaire with a 134 watt, 4000K light engine wired to 120 volts with a pendant length of 24" and painted white texture polyester powder coat.

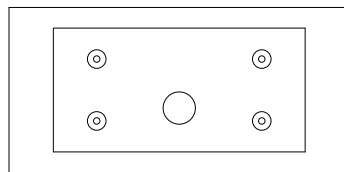
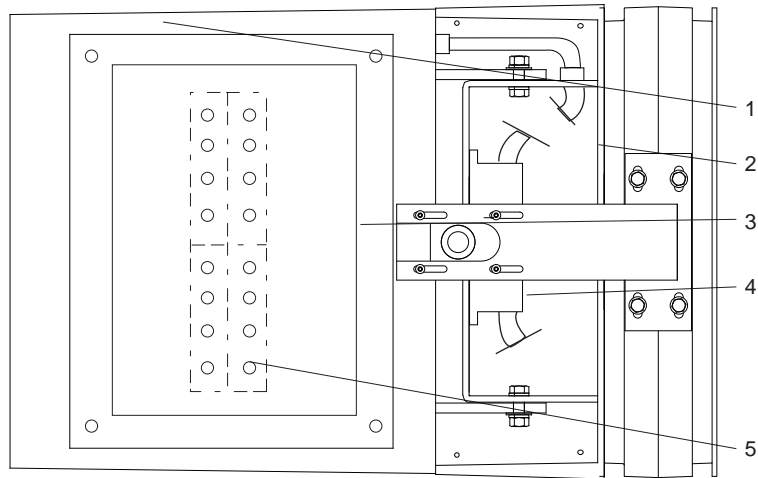
CONSTRUCTION	MOUNTING	OPTICAL	PROTECTION
<p>Materials Adjustable lamp housing: Cast aluminum. Driver enclosure: Cast aluminum with top cover plate. Lens: Clear, tempered glass in captive cast aluminum gasketed frame. Mounting stem: Aluminum tubing.</p> <p>Electrical Components Light engine: Aluminum core PCB each with 4 Luxeon M emitters and Ledil Strata - SQ optics. Driver: High efficiency, <20% THD, >90% PF</p>	<p>The 6013LED luminaire is designed for pendant mounting. The rectangular canopy is designed to mount over a recessed 4" octagon j-box. The stem is 1-1/8" steel tubing with an offset to accommodate the luminaire center of gravity. The canopy is fastened to the ceiling separately from the j-box. Ceiling strength needs to be substantial enough to handle the weight (70 lbs.).</p>	<p>The 6013LED optical system is optimized to provide an asymmetric indirect distribution. Head is adjustable (+/- 15°) to customize aiming upon installation, if required.</p>	<p>The 6013LED is normally provided for indoor dry or damp locations to UL and CSA standards but, if ordered, can be made suitable for wet locations to UL and CSA standards. (LOC 2, covered ceiling)</p> <p>All units have a protective, tempered, glass shield to protect the LED compartment. The wet location units are totally sealed for wet location usage (IP65).</p> <p>LEDs are rated for 50,000 hour life with lumen maintenance > 70% (L70).</p>



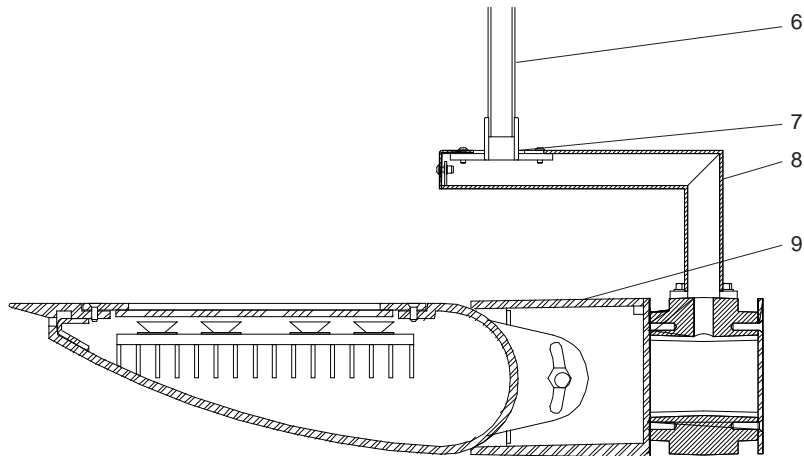
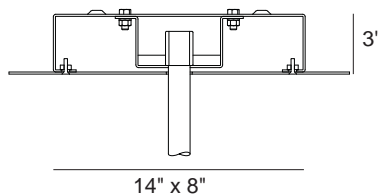
Cut-off Visor Option



+/- 15° Field Adjustable Head



Ceiling Canopy
Assembly



Streamline Indirect 6013LED Detailed Product Description

- | | | | |
|---|---|---|--|
| 1 | Adjustable Lamp Housing (+/-15°) - Cast Aluminum | 6 | Mounting Stem - 1 1/8" Tubing |
| 2 | Driver Enclosure - Cast Aluminum with Top Cover Plate | 7 | Pendant Mount Bracket - Cast Aluminum |
| 3 | Enclosed LED Glass Frame and Heat Sink Assembly | 8 | Cantilever Support Arm - Cast Aluminum |
| 4 | Driver | 9 | Housing Assembly |
| 5 | LED Boards 4 x Luxeon 'M' Emitters Each | | |