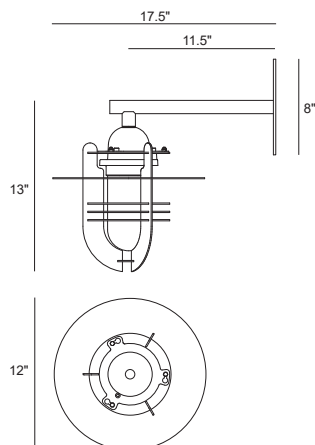




Integral driver option shown



Saturna 4014LED Mini Wall Mount

EXTERIOR

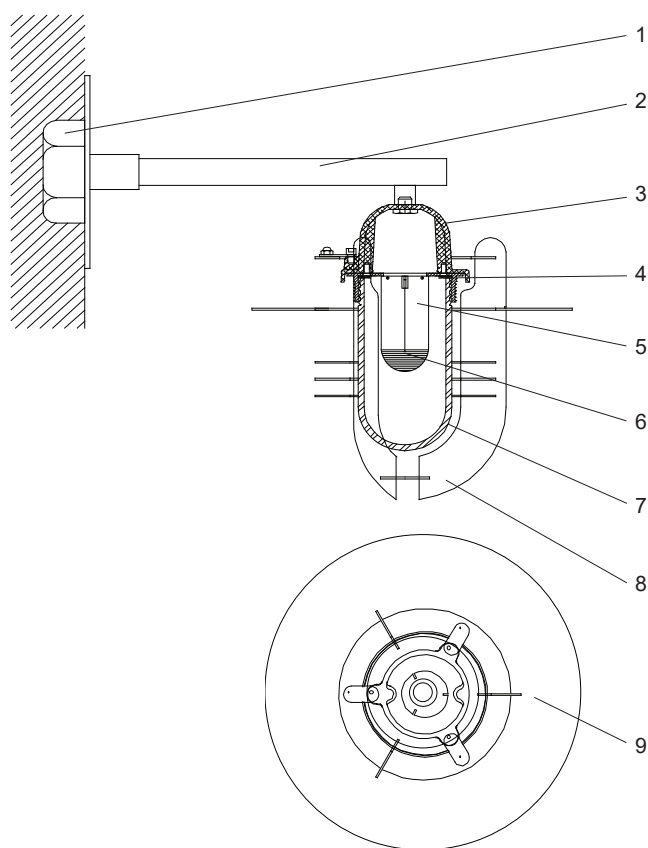
MODEL	LED	COLOR TEMPERATURE	VOLT	LENS	DRIVER LOCATION	OPTIONS	COLOUR
4014	1x16L <i>LED module</i> 16 watt	40* <i>4000K</i> 1700 lumens ¹	120*	RF* <i>frost</i>	REM* <i>remote driver</i>	FS <i>fusing</i>	WT <i>white texture</i>
			208		INT <i>integral driver</i>		BT <i>black texture</i>
			240				SM <i>silver metallic</i>
			277				AN <i>aluminum natural</i>
			347				BZ <i>bronze</i>
							GM <i>gunmetal</i>
							WS <i>white satin</i>
							BM <i>black matte</i>
							RAL <i>specify no.</i>

*Standard configuration unless otherwise specified ¹Delivered lumens (4000K, 80 CRI)

SAMPLE CATALOG NUMBER: 4014 - 1x16L - 40 - 120 - RF - REM - WT

Using this catalog number would order 1 model 4014 wall mount luminaire with a 16 watt, 4000K, 1700 lumen light engine wired to 120 volts, with a frosted glass globe and painted with white texture polyester powder coat. Remote mounted driver.

CONSTRUCTION	MOUNTING	OPTICAL	PROTECTION
<p>Materials Luminaire housing: Cast aluminum. Gasket: EPDM rubber. Strut assembly: Aluminum sheet, keyholed removal. Reflector disks: Aluminum sheet. Lens/diffuser: Threaded, tempered glass. Arm: Extruded aluminum, round. Wall plate: Aluminum. Exposed fasteners: Stainless steel.</p> <p>LED Components Driver: Constant current, 450mA. Light Engine: Chip-on-Board 13mm LES, Zhaga Book 3 Compliant Socket.</p>	<p>Luminaire is designed for mounting over a recessed j-box. Mounting plate is mounted to wall independent of j-box. Adequate backing must be provided. Sealant is required around circumference of wall plate leaving a void at bottom for drainage. Remote mounted driver assemblies are standard. (Consult factory for lamp to driver distance.)</p>	<p>Luminaire is a non-cutoff decorative luminaire with a standard frosted glass globe.</p>	<p>The Saturna mini wall mount is listed for use in wet locations to UL and CSA Standards. LED life: 50,000 hours minimum, L70 @ 25°C.</p>



Saturna 4014LED Detailed Product Description

- | | | | |
|---|---|----|--|
| 1 | 4" Recessed Octagon J-Box (By Others) | 7 | Lens/Diffuser - Frosted Glass Threaded - Tempered |
| 2 | Arm and Mounting Bracket - .188" Thick Mounting Bracket and Round Aluminum Extruded Arm | 8 | Strut Assembly - Keyholed |
| 3 | Housing - Cast Aluminum | 9 | Reflector Disk - .102" Aluminum |
| 4 | Gasket - E.P.D.M. Rubber | 10 | Driver (Remote Standard) 450mA, 120-277 Volt Input |
| 5 | Heatsink | | |
| 6 | Chip-on-Board 13mm LES, Zhaga Book 3 Compliant Socket | | |