

Orchestra Circle 2756PLED Maxi Pendant Mount INTERIOR

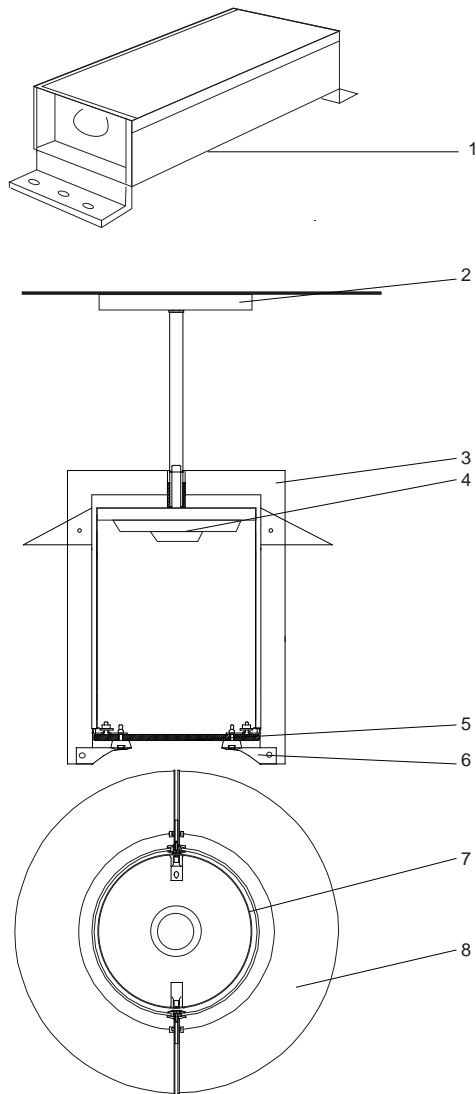
MODEL	LED		VOLT	SHIELD	DIFFUSER	DRIVER LOCATION	OPTIONS	COLOR
	WATTS	COLOR TEMPERATURE						
2756P	32L 2612 lumens ¹ 32w LED/ 38w system	40 4000K	120*	PF <i>perforated liner</i>	RF* <i>frost</i>	REM* <i>remote driver</i>	P(__") <i>pendant length</i>	WT <i>white texture</i>
		30 3000K	208		CL <i>clear</i>	INT <i>integral driver</i>		BT <i>black texture</i>
		35 3500K	240				C86 <i>ball aligner hanger</i>	SM <i>silver metallic</i>
			277				WL <i>wet location listing</i>	AN <i>aluminum natural</i>
			347+					BZ <i>bronze</i>
							DIM <i>dimming driver</i>	GM <i>gunmetal</i>
								WS <i>white satin</i>
							90 <i>90 CRI</i>	BM <i>black matte</i>
								RAL <i>specify no.</i>

*Standard configuration unless otherwise specified ¹Delivered lumens based on PF option and standard frost diffuser (4000K, 80 CRI) +Consult factory

SAMPLE CATALOG NUMBER: 2756P - 32L40 - 120 - RF - REM - WT

Using this catalog number would order 1 model 2756P maxi circle pendant with 4000K, 80 CRI LED light engine at 120 volts with frosted acrylic lens and remote mounted driver, painted with white texture polyester powder coat.

CONSTRUCTION	MOUNTING	OPTICAL	PROTECTION
<p>Materials Support Frame: Heavy aluminum plate. Hinge/Lock up: Pressure die cast aluminum. Glare guard / Ceiling canopy / Reflector disk: Aluminum sheet, die formed. Diffusers (side): Thermo-formed acrylic. Bottom lens: Acrylic. Fasteners: Stainless steel.</p> <p>Electrical Components Driver: Constant current 900mA, 84% efficiency. Light engine: COB 1208 24mm x 20mm with a 15mm LES.</p>	<p>This luminaire is designed to mount to a recessed 4" octagon j-box (by others). Remote mounted driver assemblies are standard (consult factory for lamp to driver distance). Optional integral driver assemblies are offered. For wet locations luminaire must be restrained from wind action. Special hanger or restraint required (by others).</p>	<p>Luminaire has a choice of frost or clear lens and diffuser, with frost supplied as standard. The perforated liner is supplied if specified. The reflector disk is fixed in top position. Standard optic, Type V square (130°).</p>	<p>The Orchestra maxi pendant is listed for use in damp locations to UL and CSA Standards. An optional wet location label can be provided.</p> <p>LEDs are rated for 50,000 hour life with lumen maintenance >70% (L70).</p>



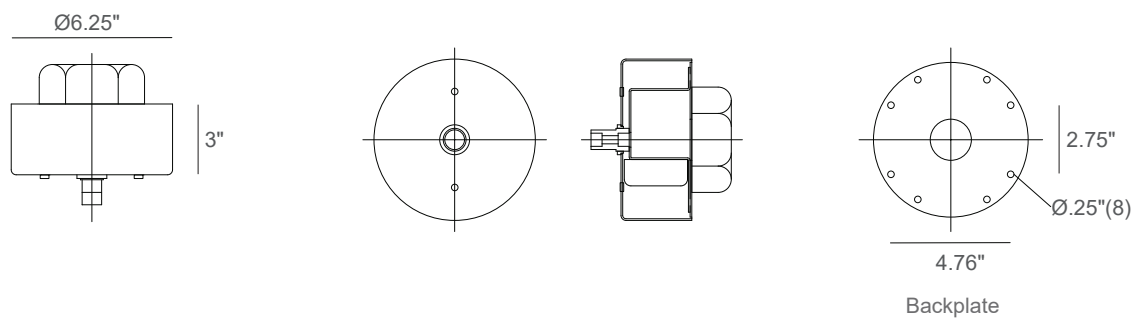
Remote Driver Configuration

Orchestra Circle 2756PLED Detailed Product Description

- | | | | |
|---|--|---|--|
| 1 | Driver - 900 mA (Remote Mounted) | 5 | Acrylic Lens .375" Thick |
| 2 | Canopy Assembly with Hangstraight Swivel | 6 | Diecast Aluminum Lock Up |
| 3 | Frame Support .250" Aluminum | 7 | Acrylic Cylinder (.125" Thick) |
| 4 | LED Light Engine with Silicone Optic and Heat Sink | 8 | Reflector Disk .102" Aluminum (Fixed Top Position) |

Orchestra Circle 2756PLED Maxi Pendant Mount

Integral Driver Canopy Description



Remote Driver Description

